

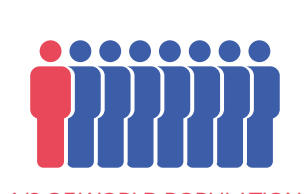
## Oral health providers: pay attention to patients' general health

### Periodontitis general facts

Severe **periodontitis** is the **sixth most common** disease globally

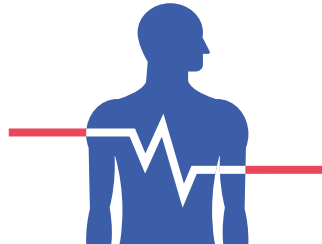


**1.1 billion** cases of severe periodontitis



1/8 OF WORLD POPULATION

**Negative impact** on general health



Associated with **significant medical and dental care costs**



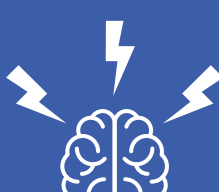
### Patients with perio and systemic diseases share common risk factors



Smoking



Poor diet



Stress



Hypertension



Obesity



Low physical activity

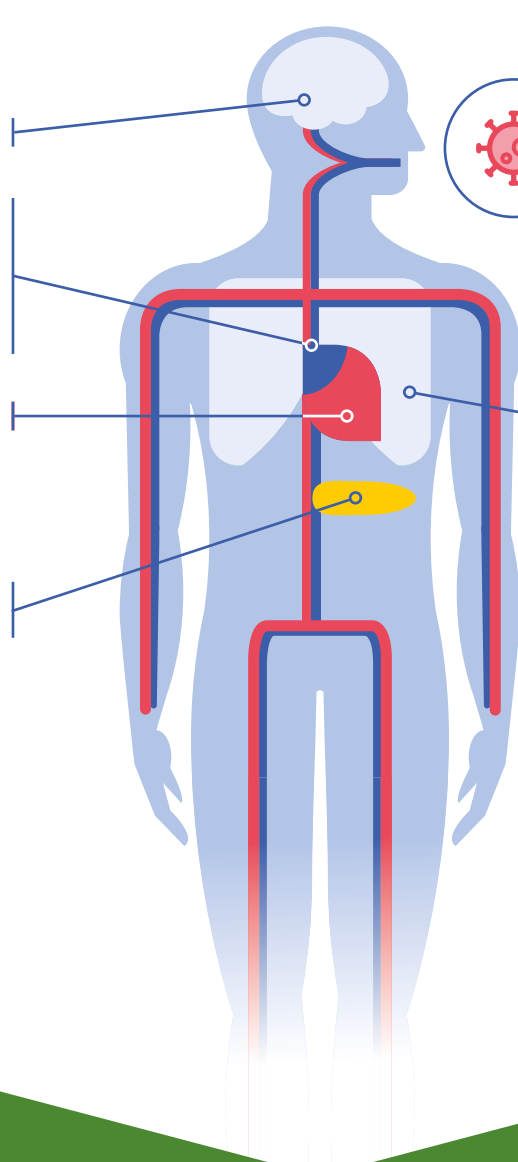
### Associations between periodontitis and systemic diseases

#### CVD:

- Higher risk of stroke
- Higher prevalence of atherothrombosis
- Higher prevalence of coronary artery disease
- Risk of myocardial infarction

#### Diabetes:

- Increased risk of developing type 2 diabetes



#### Covid-19:

- Higher severity of Covid-19

#### Respiratory disease:

- Associated with 5% lower functional lung capacity
- Associated with a higher risk of COPD & obstructive sleep apnea

### Assess patient's health condition and presence of risk factors

Ask patients with periodontitis the following:

1.

Do you **smoke**?

2.

Do you have **high blood pressure**?

3.

Have you recently **checked your blood sugar levels**?

4.

Do you feel **stressed**?

5.

Are you **taking medication** regularly?

6.

Have you been diagnosed with a **heart condition**?

7.

Do you suffer from a **respiratory condition**?

### Inform patients with systemic diseases



About the links between periodontitis and other diseases



Of the higher risk of having periodontal diseases



Of the possible increased severity of the disease



Preventing and/or treating periodontitis will contribute to general health



Treating periodontitis is safe after consulting with the family doctor



Visiting an oral healthcare provider regularly, at least once a year, is vital

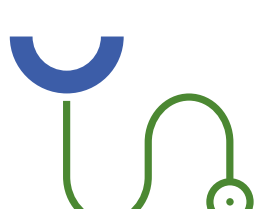
### Oral health providers and family doctors working together can save teeth and lives



Periodontitis is **preventable**



Periodontitis is **treatable** and **teeth can be maintained** for life



Inform your patients about the link between periodontitis and systemic diseases



Screen your patients for risk factors and systemic diseases



Refer your patients with risk factors to their family doctor



Share your patients' history with their family doctor